



The Cost of Diabetes

Angela Puim - PharmD, RPh, CBE, CDE, CRE



Table Of Contents

1

Introduction

2

Provincial
Supports

3

Community
Supports





*Canadians with diabetes can face **annual out-of-pocket costs** ranging from \$2,000 to over \$10,000 depending on the severity of their condition and the technologies they use.*

- Diabetes Canada 2024

Financial Implications of Diabetes



- ❖ Medication costs
- ❖ Glucose monitoring supplies (strips, lancets)
- ❖ Devices (CGMs, insulin pumps)
- ❖ Indirect costs of diabetes: missed work, hospital stays, potential complications



Provincial Supports







Ontario Drug Benefit (ODB)

Who is automatically covered under ODB?

- Age 65+
- Age <25 who is not covered by a private plan (OHIP+)
- Living in a long-term care home
- Receiving Ontario Works or ODSP
- Enrolled in the Trillium Drug Program
- Receiving home care services via Ontario Health at Home

What does ODB cover?

- Over 5 000 prescription medications
 - Diabetes related supplies*
 - Pharmacy services*
 - Special drugs and devices through exceptional access programs
- 
- 



Glucose Monitoring ODB Coverage



- ODB covers **diabetic testing strips** based on specific criteria*
- ODB covers **flash glucose monitoring systems** for those with a valid prescription for insulin
- ODB does **NOT** cover **lancets** (generic or store brand lancets are on average 5-10\$ for a 100 pack size)

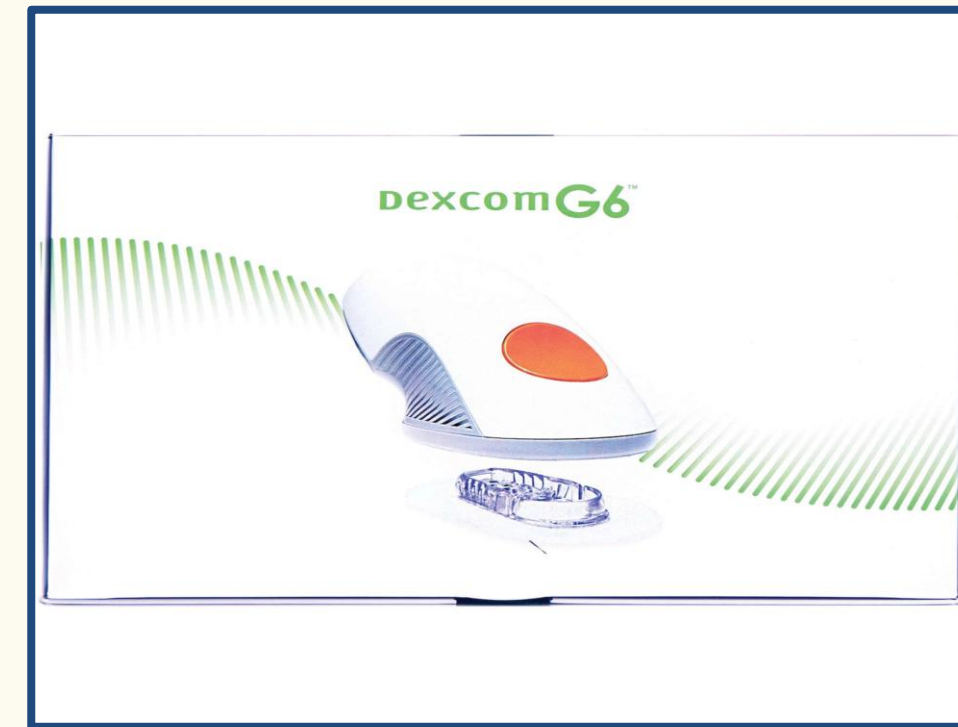




Which Sensors are Covered?



- Freestyle libre 2 sensors are covered for anyone under **ODB** with a valid **prescription**
- Eligibility: Any type 1 or type 2 diabetic **on insulin therapy**



- Dexcom G6/ G7 sensors are covered through **ADP** (assisted devices program) with a **prescription** and certain medical criteria
- Eligibility: For Type 1 diabetics with certain **medical criteria***

****Medtronic Guardian 3 and Guardian 4 sensors are also covered under ADP**





How many Sensors are covered under ODB or ADP?



- Sensor lifespan: 14 days
- Sensors per year: max **33 sensors**



- Sensor lifespan: 10 day
- G6 Sensors: max 78 sensors
24-month period
- G7 Sensors: max is 74 sensors
per 24-month period



Pharmacy Services Covered Under ODB



**Quit
Smoking
Program**



**Medication
Reviews**



**Vaccines
&
Minor
Ailments**





Trillium Drug Program

Who is automatically covered under Trillium?

- Nobody, you need to apply for coverage through Trillium

Who is Trillium beneficial for?

- Adults with high drug costs relative to their income

Does Trillium cover everything?

- No, you are responsible for paying a quarterly deductible
- Your deductible amount is based on your income
- After meeting the deductible, prescriptions will be up to 2\$ each





Assistive Devices Program



- The ADP provides financial assistance for the purchase of **insulin pumps and related supplies**.
- To be eligible you need to have a long-term disability (i.e. require the supplies for longer than 6 months).
- ADP will cover up to 75% of the cost for insulin pumps and related supplies.





Assistive Devices Program

→ For Dexcom sensors coverage through ADP:

- A diabetes education program must fill out and submit a form on your behalf
- IF eligible, they will cover 100% of the cost



Good to Know

- ADP does not cover the FreeStyle Libre 2, this is covered through the Ontario Drug Benefit (ODB) program
- ADP also helps fund other assistive devices including mobility aids, communication devices, and prosthetics



Syringes For Seniors Program

(Funded Through ADP)



- As you may know already, ODB and Trillium do NOT cover syringes, needles, and lancets
- Private insurance MAY cover syringes, needles, and lancets; always a good idea to double check your plan coverage
- **Syringes for seniors is a great initiative to help get some money back for this type of supplies!**





Syringes For Seniors Program

(Funded Through ADP)



- **ADP** in Ontario provides an annual grant of **\$170** to help cover the cost of **insulin syringes and needles**, which includes **pen needles**.
- **Eligibility:** ages 65 and older who require daily insulin injections and live at home.



Syringes For Seniors Program (Funded Through ADP)



How to Apply:

- Do not need a prescribers signature to apply
- Complete the online application form on your own*





Monitoring for Health Program



Administered by Diabetes Canada, the MFHP offers reimbursement for the cost of blood glucose monitoring supplies.

- **Eligibility:** Ontario residents using insulin and individuals with gestational diabetes (regardless of insulin status), not receiving coverage for these supplies through other programs.
- **Coverage:** Up to 75% reimbursement for the cost of blood glucose monitors lancets and strips, with a maximum of \$920 per year.



**DIABETES
CANADA**





Ontario Disability Support Program



ODSP provides income and employment support to individuals with disabilities, including coverage for diabetes-related medical supplies

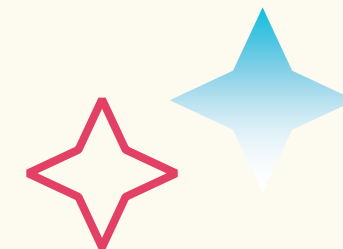
- **Eligibility:** Ontario residents with a substantial physical or mental impairment expected to last a year or more
- **Coverage:** Includes prescription medications, syringes, lancets, and blood glucose monitors






Disability Tax Credit

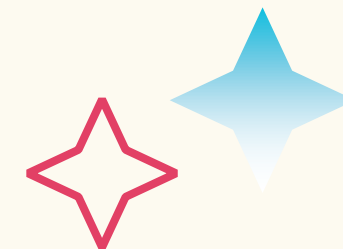
- Non-refundable tax credit for eligible individuals
- May apply retroactively
- Requires physician-signed application





Note on Insulin Biosimilars

 As of 2023 and reinforced in 2024–2025, **Ontario is transitioning publicly funded patients to biosimilars** for insulins like Lantus, Humalog, and NovoRapid. This means if you're on one of the original brands, you may be asked to switch to the biosimilar version (like Basaglar, Trurapi, etc.)





Note on Insulin Biosimilars



What are biosimilars?

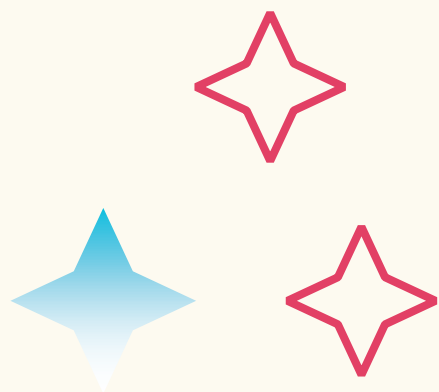
Similar to 'generic' versions of a drug. They are biologic drugs, made from living cells, that are close to identical, not 100% identical, because it is impossible to make an exact copy of a drug from a living cell.



Are they safe?

They are just as safe and effective as the original molecule since they work the same way in the body. They typically cost much less than the original.





Some Insulin Biosimilars

<u>Brand Name</u>	<u>Biosimilar For</u>	<u>Type of Insulin</u>	<u>Notes</u>
Basaglar	Lantus	Long-acting (glargine)	Taken once daily. Often used as a “background” insulin.
Trurapi/Kirsty	NovoRapid	Rapid-acting (aspart)	Taken before meals to manage food-related blood sugar spikes.
Semglee	Lantus	Long-acting (glargine)	Taken once daily. Often used as a “background” insulin.
Admelog	Humalog	Rapid-acting (lispro)	Taken before meals to manage food-related blood sugar spikes.





Community Supports





What Can We Offer



**Langs Community
Health and Wellness**



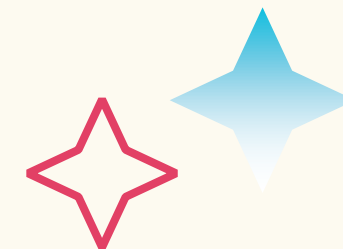
**Preston Medical
Pharmacy**





Langs Diabetes Education Program

- 1-on-1 Support
 - Meet with diabetes educators for personalized care.
- Group Education
 - Attend classes on diet, insulin, and glucose control.
- Wellness Services
 - Access foot care, exercise programs, and referrals.



Preston Medical Pharmacy

- MedsCheck Diabetes Program
 - Provides annual medication reviews to optimize diabetes treatment plans.
- Home Health Supplies & Support
 - Offers diabetic supplies, mobility aids, and free prescription delivery.
- Certified Diabetes Educators
 - All our pharmacists are Certified Diabetes Educators offering personalized consultations to help manage blood sugar and lifestyle choices.





Thank You! Any Questions?

Contact me at:

- ❖ Email: angela_pmp@rogers.com
- ❖ Website: www.prestonmed.ca
- ❖ Pharmacy: 125 Waterloo Street
South Cambridge, ON N3H 1N3
- ❖ Phone: 519-653-1870
- ❖ Fax: 510-653-9232

